

## Fall 2025 Business/Civic Leadership Forum Report







# Welcome



Forum Report Prepared By: JDGAdvisors

## Table of Contents

<a href="#"><u>Welcome &amp; Contents</u></a>	<a href="#"><u>2</u></a>
<a href="#"><u>Fall 2025 Leadership Forum Class</u></a>	<a href="#"><u>3</u></a>
<a href="#"><u>Welcome/Kickoff Reception</u></a>	<a href="#"><u>4</u></a>
<a href="#"><u>Day 2: Galveston Retreat</u></a>	<a href="#"><u>5-6</u></a>
<a href="#"><u>Dinner &amp; Introductions</u></a>	<a href="#"><u>5</u></a>
<a href="#"><u>Russell Richard: History Map</u></a>	<a href="#"><u>6</u></a>
<a href="#"><u>Day 3: Galveston Retreat</u></a>	<a href="#"><u>7-22</u></a>
<a href="#"><u>Morning Reflections</u></a>	<a href="#"><u>7</u></a>
<a href="#"><u>Speed Networking</u></a>	<a href="#"><u>8-9</u></a>
<a href="#"><u>Galveston Discovery Excursion</u></a>	<a href="#"><u>10</u></a>
<a href="#"><u>Excursion Presentation Group 1</u></a>	<a href="#"><u>11-12</u></a>
<a href="#"><u>Excursion Presentation Group 2</u></a>	<a href="#"><u>13-14</u></a>
<a href="#"><u>Excursion Presentation Group 3</u></a>	<a href="#"><u>15-16</u></a>
<a href="#"><u>Excursion Presentation Group 4</u></a>	<a href="#"><u>17-18</u></a>
<a href="#"><u>Excursion Presentation Group 5</u></a>	<a href="#"><u>19-20</u></a>
<a href="#"><u>Excursion Presentation Group 6</u></a>	<a href="#"><u>21-22</u></a>
<a href="#"><u>Day 4: Houston's Business Climate &amp; Population Insights</u></a>	<a href="#"><u>23-29</u></a>
<a href="#"><u>John Arcidiacono: Health Museum Intro</u></a>	<a href="#"><u>24</u></a>
<a href="#"><u>Steve Kean: Advancing Opportunity</u></a>	<a href="#"><u>25-26</u></a>
<a href="#"><u>Kristen McClean: Graphic Recorder</u></a>	<a href="#"><u>27</u></a>
<a href="#"><u>Dr. Ruth López Turley: Houston Demographics</u></a>	<a href="#"><u>28-29</u></a>
<a href="#"><u>Day 5: A Closer Look at Affordable Housing</u></a>	<a href="#"><u>30-35</u></a>
<a href="#"><u>Chris Schreck: Federal Reserve Intro &amp; Tour</u></a>	<a href="#"><u>30-31</u></a>
<a href="#"><u>Tamara Foster &amp; Katie Lamb: Homelessness</u></a>	<a href="#"><u>32-33</u></a>
<a href="#"><u>Learning Journey Selection</u></a>	<a href="#"><u>34</u></a>
<a href="#"><u>Learning Journey Planning</u></a>	<a href="#"><u>35</u></a>
<a href="#"><u>Day 6: Understanding the Impact of Immigration</u></a>	<a href="#"><u>36</u></a>
<a href="#"><u>Stan Marek &amp; Linda Lorelle: Immigration</u></a>	<a href="#"><u>36</u></a>
<a href="#"><u>Day 7: Digital Innovation and Artificial Intelligence</u></a>	<a href="#"><u>37-39</u></a>
<a href="#"><u>Dr. Debalina Sengupta: Artificial Intelligence</u></a>	<a href="#"><u>38-39</u></a>
<a href="#"><u>Day 7 &amp; 8: Learning Journey Presentations</u></a>	<a href="#"><u>40-50</u></a>
<a href="#"><u>Education</u></a>	<a href="#"><u>40-41</u></a>
<a href="#"><u>Healthcare</u></a>	<a href="#"><u>42-43</u></a>
<a href="#"><u>Innovation/AI</u></a>	<a href="#"><u>44-46</u></a>
<a href="#"><u>Infrastructure</u></a>	<a href="#"><u>47-48</u></a>
<a href="#"><u>Future Workforce</u></a>	<a href="#"><u>49-50</u></a>
<a href="#"><u>Day 8: The Importance of Early Childhood Education</u></a>	<a href="#"><u>51-59</u></a>
<a href="#"><u>Dr. Melanie Johnson: Early Childhood Education</u></a>	<a href="#"><u>52-53</u></a>
<a href="#"><u>CEO and Board Chair Acknowledgement</u></a>	<a href="#"><u>54</u></a>
<a href="#"><u>Graduation</u></a>	<a href="#"><u>55-58</u></a>
<a href="#"><u>CHF Fall Class of 2025</u></a>	<a href="#"><u>59</u></a>





# CLASS of Fall 2025



**Christine Abbruscato**  
Port Houston

**Michael Amilcar**  
Be Equitable

**Garrett Auzenne**  
Civi Consultants

**Lisa Marie Avendaño**  
Houston Zoo

**Jennifer Baron**  
AHC

**John Calhoun**  
Memorial Hermann Health  
System

**Rhonda Cook**  
New Hope Housing

**Jennifer Dean**  
Smith and Dean, Inc.

**Shekira Dennis**  
Harris Country

**Frances Villagran-Glover**  
Houston City College

**Adam Fitzhenry**  
Memorial Hermann Health  
System  
**Seleria Fletcher**  
Memorial Hermann Hospital  
Katy

**Carla Glover**  
Civicap Partners

**Arquella Hargrove**  
Alchemy Consulting Group

**Lindsey Hurst**  
Houston Ballet

**Meredith Johnson**  
METRO

**Bryce Kennard**  
Harris County Sports &  
Convention Corporation

**Jason Kosarek**  
Daikin Comfort Technologies

**Victoria Lara**  
Harris County Precinct 2

**Eldon Lewis**  
KIPP Texas Public Schools

**Orjanel Lewis**  
Exxon Mobil

**Claudia Maldonado**  
Get Choice

**Scott Marr**  
HDR

**Elizabeth Marshall Black**  
K Harvey Brand Partners

**Sandra Martinez**  
New Hope Housing

**Sheroo Mukhtiar**  
Interfaith Ministries

**Otis Murrel**  
Silver Eagle

**Emily Pauley**  
Houston Health Foundation

**Amy Pierce**  
Community Leader

**Colleen Reilly**  
Houston City College

**Darlin Rodriguez**  
MyCHN

**Carla Sapsford**  
Strategic Knowledge Partners  
LLC

**Tracey Shappro**  
Vision Production Group

**Gabriela Smith**  
Big State Construction

**Adam Traweek**  
Amegy Bank

**Angelia Tucker**  
Memorial Hermann Health  
System

**Whitney Whitmire**  
Whitmire & Munoz

**Jeff Wilkinson**  
NRG

**Mike Zimmerman**  
Camden

## CHF STAFF

**David Gow**, President & CEO

**Russell Richard**, SVP - Leadership Initiatives, Alumni Engagement, Community  
Outreach

**Jennifer Beers**, Coordinator







# Day 1: Welcome/Kickoff Reception

We first met on August 26, 2025, for a Welcome/Kick-off Reception with the Fall 2025 Leadership Forum at the Center for Houston's Future offices. Russell Richard, the Center's SVP of Leadership Initiatives, Alumni Engagement, & Community Outreach, welcomed the class and thanked everyone for their participation. Cindy Yeilding, CHF Board Chair, and David Gow, CHF President & CEO, informed us about the great work of the Center.







## Day 2: Galveston Retreat-Networking Reception & Dinner

On Thursday, September 4, we met at the Tremont House Hotel in Galveston, for a reception, dinner, and class introductions.







# Houston Region History Presentation

After dinner, Russell Richard, took us on a journey through the Houston region's development from the bold and improbable founding of Houston by the Allen brothers in 1836 to the current day as the fourth largest and most culturally diverse metropolitan area in the nation. Russell, guided the discussion and together we examined the role civic leadership has played in the growth and success of the region, and noted the patterns, values and guiding principles that are in evidence throughout our history.







## Day 3: Galveston Retreat - Morning Reflections





# Day 3: Galveston Retreat - Speed Networking





# Day 3: Galveston Retreat - Speed Networking







25 YEARS CENTER FOR HOUSTON'S FUTURE  
**Galveston Discovery Excursions**



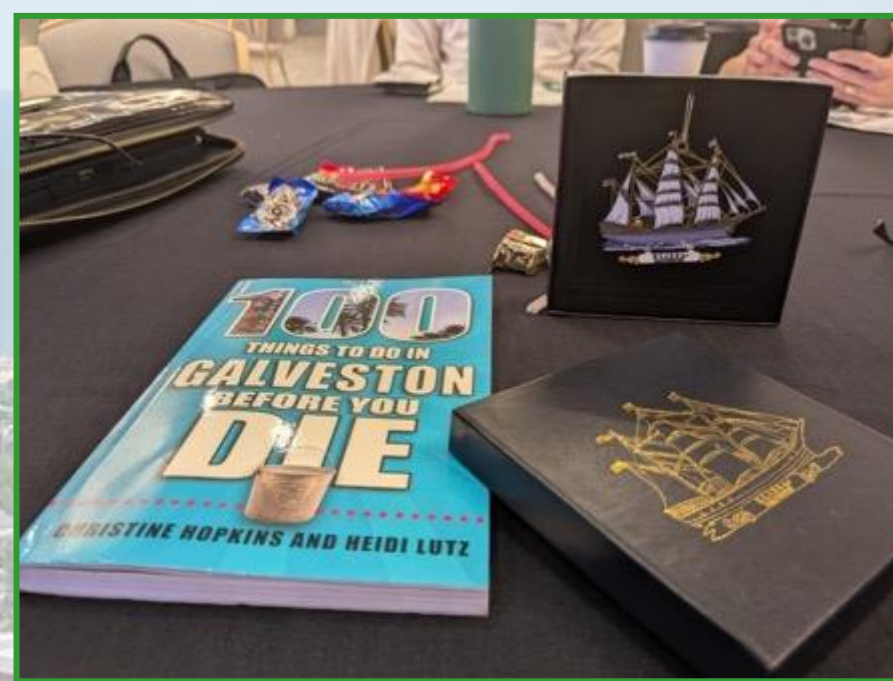


# Group 1: Excursion Presentation





# Group 1: Highlights







## Group 2: Excursion Presentation







## Group 2: Highlights







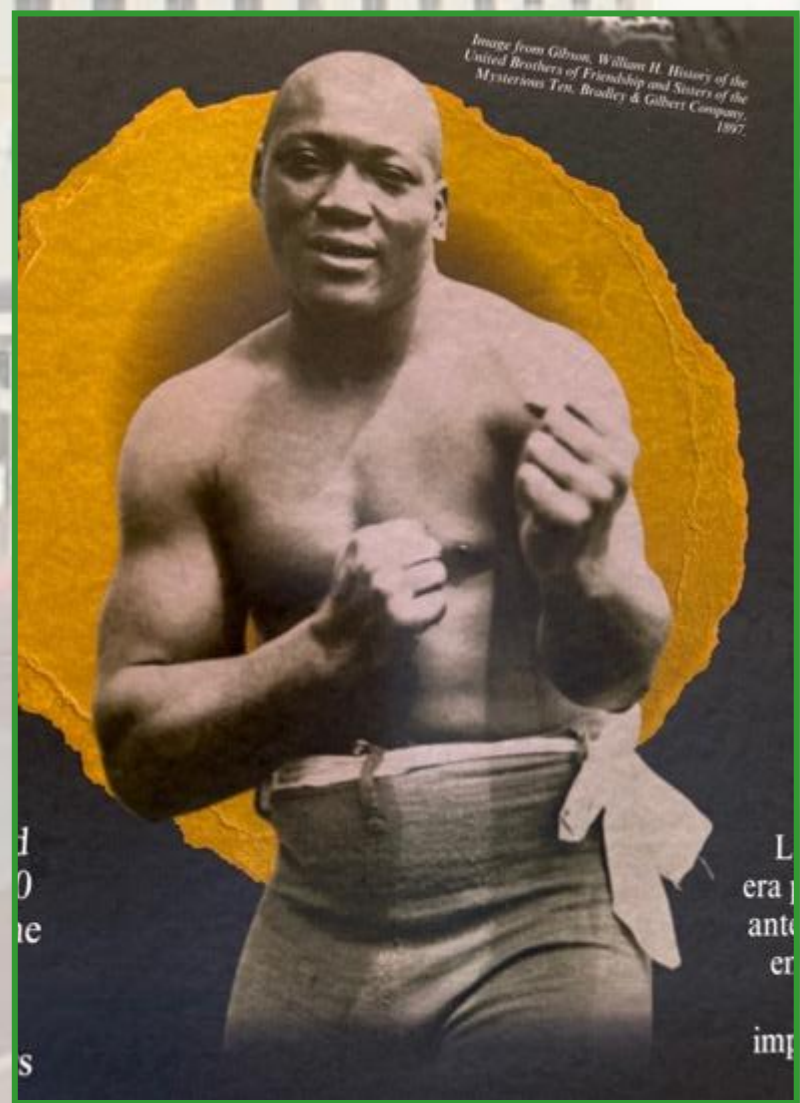
# Group 3: Excursion Presentation







# Group 3: Highlights





**WEATHERING THE STORM**  
Life for Black Galvestonians in 1900 and Beyond

**APRIL 17 through SEPTEMBER 29**

**EXHIBIT GRAND OPENING**  
**THURSDAY APRIL 17 6 - 8 PM**

We invite you to join us for a mixer in the Fox Room celebrating our newest exhibit with wine & refreshments. We are pleased to welcome Dr. Araminta Sorrell, a Certified Tourism Ambassador and expert in Black History & Culture, to Trustees Hall for a fascinating lecture at 6:30 PM.

 **Rosenberg Library**  
History Center & Museum

RESERVATIONS NOT REQUIRED, BUT PREFERRED  
[rosenberg-library.org/events](http://rosenberg-library.org/events)



## Group 4: Excursion Presentation







Group 4:  
Highlights







# Group 5: Excursion Presentation





## Group 5: Highlights







# Group 6: Excursion Presentation







Group 6:  
Highlights







## Day 4: Houston's Business Climate and Population Insights

### Health Museum Houston





# Health Museum Houston

## John Arcidiacono, President & CEO







## Advancing Opportunity

Steve Kean, President & CEO - Greater Houston Partnership







# ADVANCING OPPORTUNITY

STEVE KEAN



GROWING  
GLOBAL  
HOUSTON  
IS WINNING  
STRONG  
DEMOGRAPHICS  
ALIGNED

**YOUNGEST**  
MAJOR U.S.  
METRO

HOUSTONIANS  
BELIEVE IMMIGRANTS  
CONTRIBUTE **MORE**  
THAN THEY TAKE

LOW COST OF LIVING  
SLOWER INFLATION



GROWING IN POPULATION

25%  
FOREIGN-BORN  
POPULATION



31%  
FOREIGN-BORN  
LABOR FORCE



BENEFICIARIES  
OF ONSHOREING

PORT OF HOUSTON

1000 VENTURE  
BACKED  
STARTUPS



26 FORTUNE 500 COMPANIES

MANUFACTURING & LOGISTICS  
HIGHEST PLANNED ECONOMIC  
DEVELOPMENT

MORE THAN OIL & GAS



**EDUCATION**  
IMPROVEMENTS FOR STUDENTS  
& THEIR FAMILIES

WHERE  
TO FIND  
ECONOMIC  
OPPORTUNITY?

**WORK-  
FORCE**

WHERE DO  
I FIND  
TALENT TO  
HIRE?

DEVELOPMENT



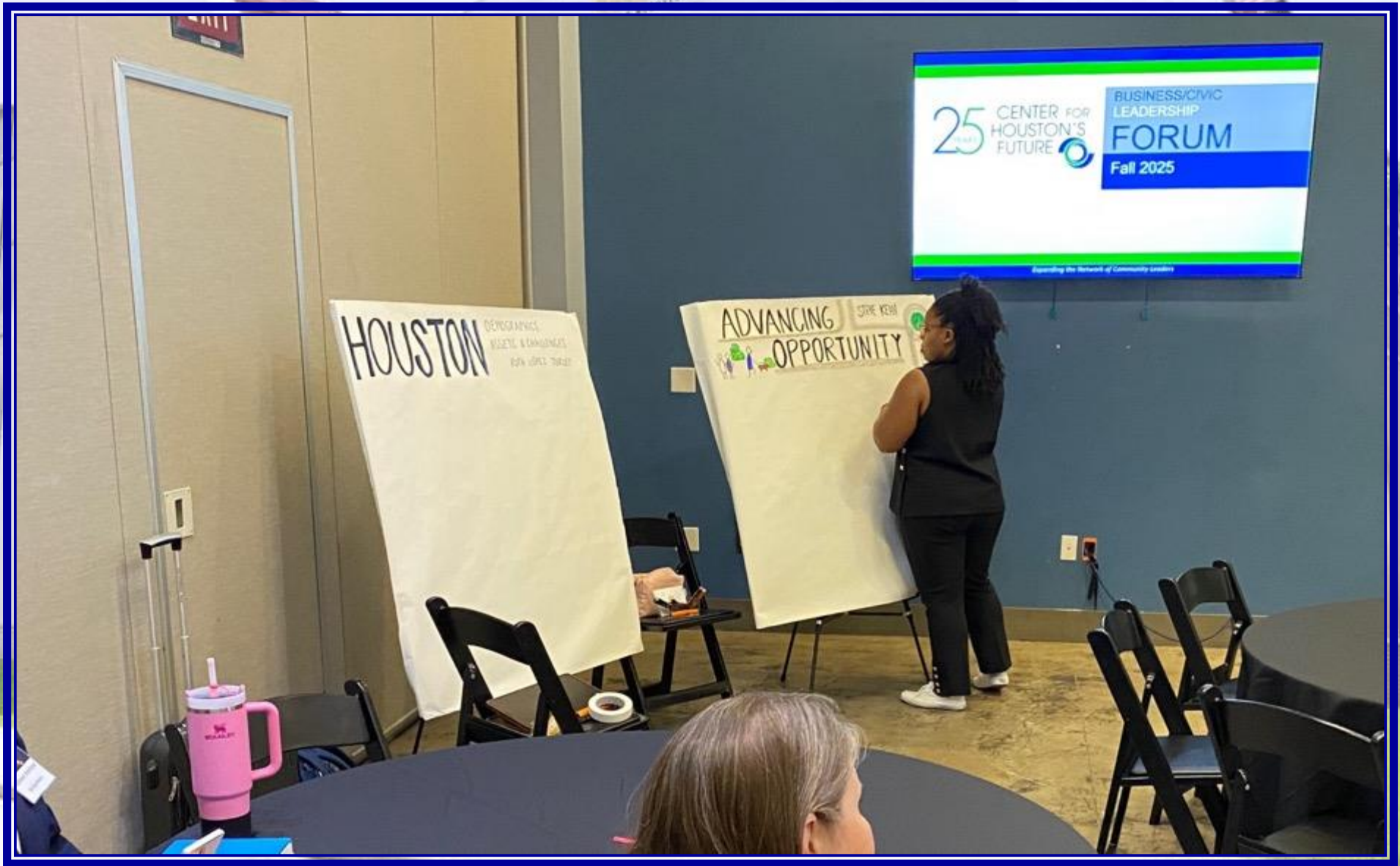
**KRISTEN  
MCLEAN**

KRISTENVISUALNOTES.COM





# Graphic Recorder Kristen McLean, Visual Notes







# Houston Demographics, Assets, & Challenges

Dr. Ruth López Turley, Kinder Institute for Urban Research





# Houston Demographics, Assets, & Challenges

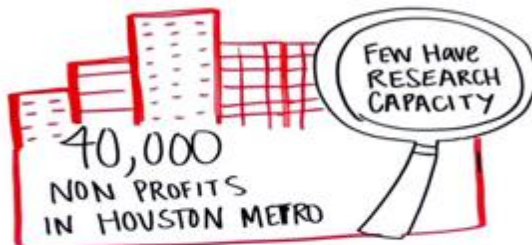
Dr. Ruth López Turley, Kinder Institute for Urban Research

## HOUSTON

DEMOGRAPHICS  
ASSETS & CHALLENGES

RUTH LÓPEZ TURLEY

KINDER INSTITUTE  
for URBAN RESEARCH



- 10,000 Person Survey
  - ↳ 80% Response Rate
- ONLINE
- BASED ON ADDRESS
- DEMOGRAPHIC → ALIGNED TO CENSUS DATA
- PAID RESPONDENTS FOR THEIR TIME

HOUSTON  
IS THE MOST  
DIVERSE METRO  
IN THE USA



RACIAL / ETHNIC  
POPULATION  
CHANGED GREATLY  
SINCE 1960



GROWN POPULATION  
BY 25+ % over 15 YEARS

1  
HOUSTON  
POPULATION  
RESEARCH  
CENTER

WHAT CHALLENGES  
DO YOU HAVE?

WHAT QUESTIONS  
DO YOU HAVE?

RESEARCH  
AS A  
PUBLIC  
GOOD

2  
HOUSTON  
EDUCATION  
RESEARCH  
CONSORTIUM

THANKS TO  
FUNDRAISING  
← ENDOWMENT  
CORPORATE  
DONATIONS

3  
CENTER  
FOR HOUSING  
& NEIGHBORHOODS

39%  
HAVE EXPERIENCE  
FOOD  
INSECURITY

4  
CENTER FOR  
ECONOMIC  
MOBILITY

5  
CENTER FOR  
COMMUNITY &  
PUBLIC HEALTH

kinder.rice.edu  
data.houston.org  
kinderudp.org

BEST  
THING ABOUT  
HOUSTON

"EVERYONE  
DESERVES TO  
HAVE FOOD"  
- RUTH LOPEZ TURLEY

FRUSTRATED  
WITH IMMIGRATION  
SYSTEM

PATHWAYS  
TO CITIZENSHIP

SHOULD  
DREAMERS  
STAY

SHOULD IMMIGRANTS WITH  
DUI BE DEPORTED  
MAJORITY SAYS YES

DIVERSITY

ECONOMIC  
OPPORTUNITY

ACTIVITIES/  
ENTERTAINMENT/  
GOODS / SERVICES

KRISTEN  
MCLEAN  
KRISTENVISUALNOTES.COM





## Day 5: A Closer Look at Affordable Housing

### Chris Schreck, Federal Reserve Bank of Houston







# Federal Reserve Bank of Houston







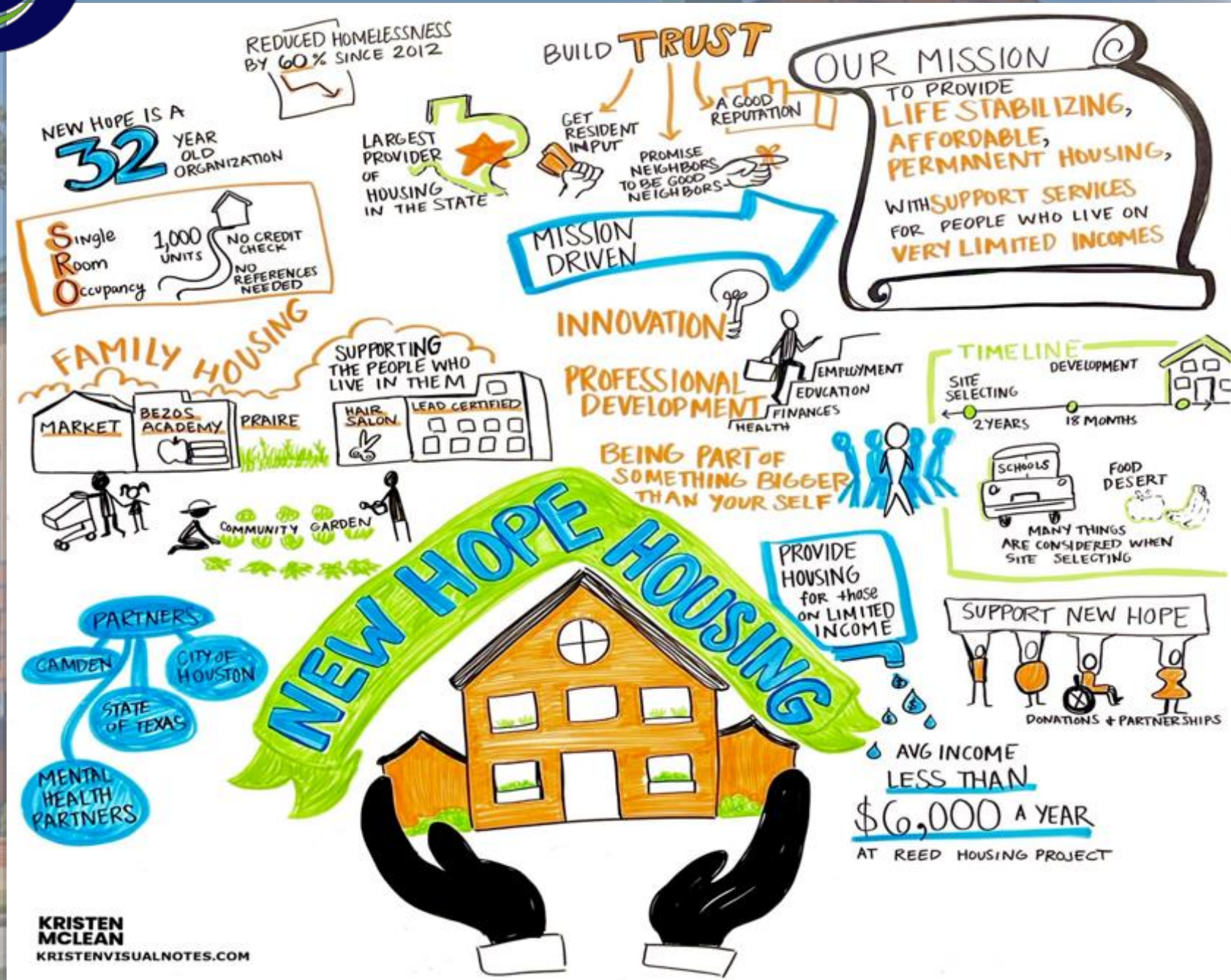
# The Complexity of Homelessness

## Tamara Foster & Katie Lamb, New Hope Housing





# The Complexity of Homelessness



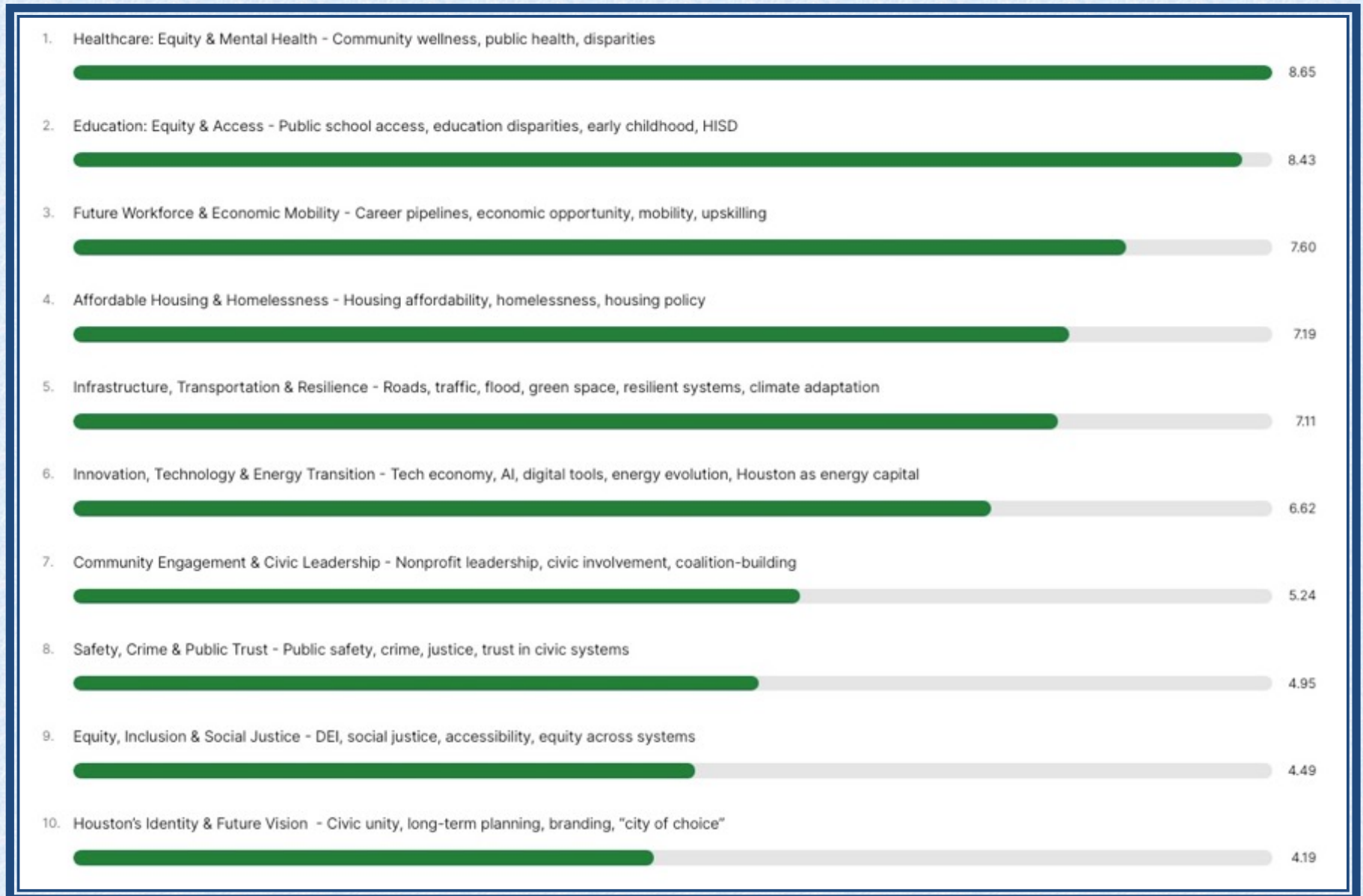




# Learning Journeys

## Making The Most Of Your Leadership Forum Experience

### Ranking Topics







# Learning Journey Teams Planning Session







## Day 6: Understanding the Impact of Immigration

Hosted at The Marek Brothers  
head office with guest speakers  
Stan Marek & Linda Lorelle  
discussing the topic of  
immigration in Houston







# Day 7: Digital Innovation & Artificial Intelligence

## The Ion Houston







# Demystifying the Artificial Intelligence Language

## Dr. Debalina Sengupta, PhD, University of Houston





# Demystifying the Artificial Intelligence Language

Dr. Debalina Sengupta, PhD, University of Houston





# Learning Journey Presentation

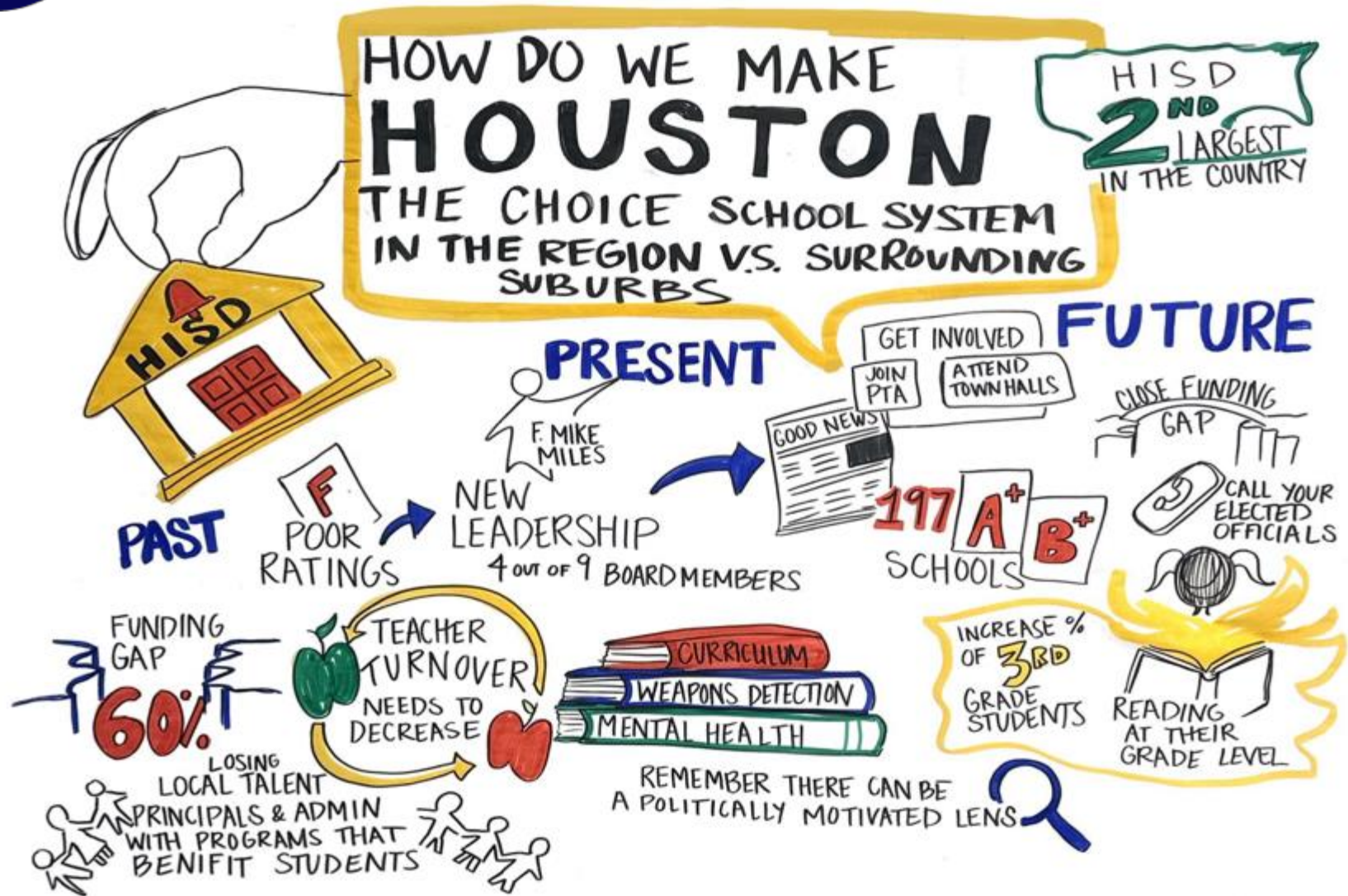
## Education







# Education



CENTER FOR HOUSTON'S FUTURE  
FALL 2025 LEARNING JOURNEY

**KRISTEN MCLEAN**  
KRISTENVISUALNOTES.COM





# Learning Journey Presentation



Healthcare







# Healthcare


## HOW CAN WE AFFECT THE STATE OF **MENTAL HEALTHCARE** IN HOUSTON, TEXAS

10,888  
REPORTED  
DOMESTIC  
VIOLENCE  
CASES IN 2020

135,000  
HARRIS COUNTY  
RESIDENTS LIVING  
WITH  
**BIPOLAR  
DISORDER**

3 MONTH  
WAITLIST  
FOR THERAPY  
OCT  
22

85,000  
HOUSTONIANS  
WITH  
PSYCHOSIS

GROWING KIDS →  ← AGING PARENTS  
**SANDWICH  
GENERATION**

88,000  
RESIDENTS  
LIVE WITH  
ALZHEIMERS

80% CAREGIVERS  
ARE FAMILY  
MEMBERS

TEXAS RANKS  
LAST IN  
ACCESS TO  
MENTAL  
HEALTHCARE

TRANSFORMED  
MENTAL HEALTH  
ECO SYSTEM

WALK IN  
CLINICS

MENTAL  
HEALTHCARE  
FIRST  
RESPONDERS

MENTAL  
HEALTH IN  
EVERY  
SCHOOL

CULTURALLY  
COMPETENT  
CARE

IF NOTHING  
CHANGES

WORKFORCE SHORTAGES  
OVER BURDENED  
- SCHOOLS  
- HOSPITALS & ERS  
- JAILS & PRISONS

HIGHER  
SUICIDE  
RATES

ECONOMIC  
STRAIN

HIGHER  
SUBSTANCE  
ABUSE

EATING  
**SOUR  
CANDY**  
SHIFTS  
YOUR ATTENTION

FROM  
FEAR

TO

FLAVOR

CENTER FOR HOUSTON'S FUTURE  
FALL 2025 LEARNING JOURNEY

**KRISTEN  
MCLEAN**

KRISTENVISUALNOTES.COM





# Learning Journey Presentation

## Innovation / AI







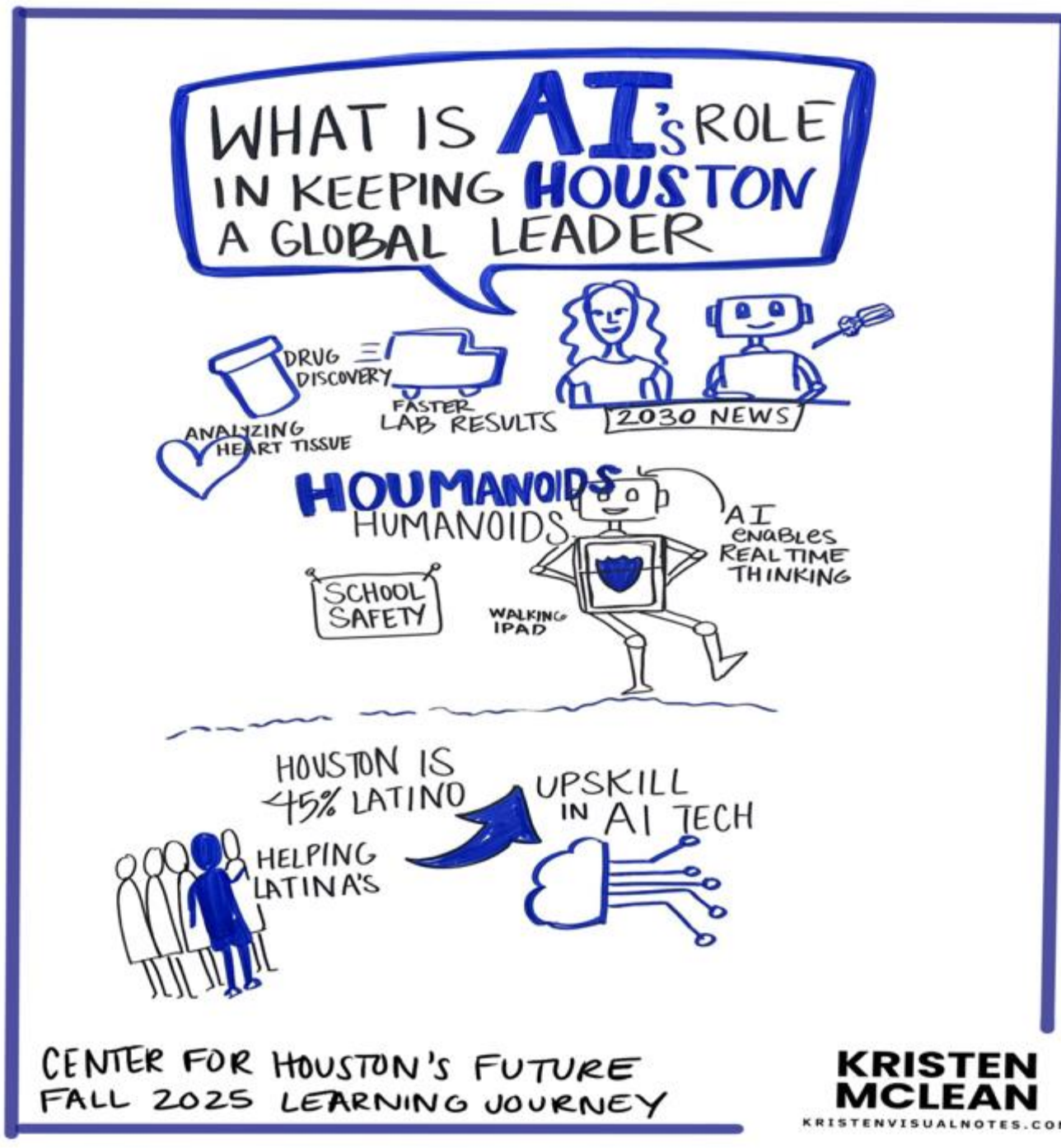
# Innovation / AI







# Innovation / AI







# Learning Journey Presentation

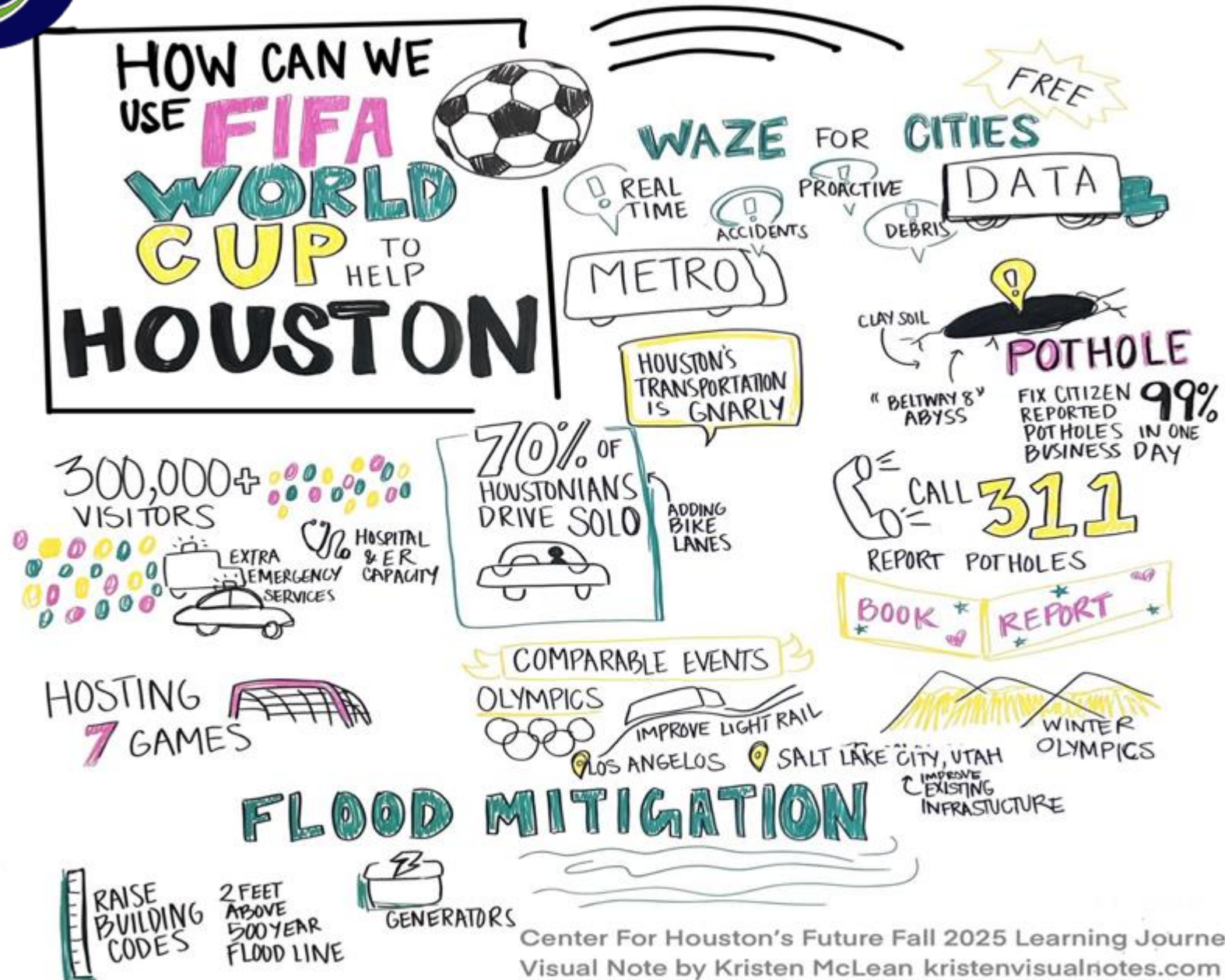
## Infrastructure, Transportation, & Resilience







# Infrastructure, Transportation, & Resilience







# Learning Journey Presentation

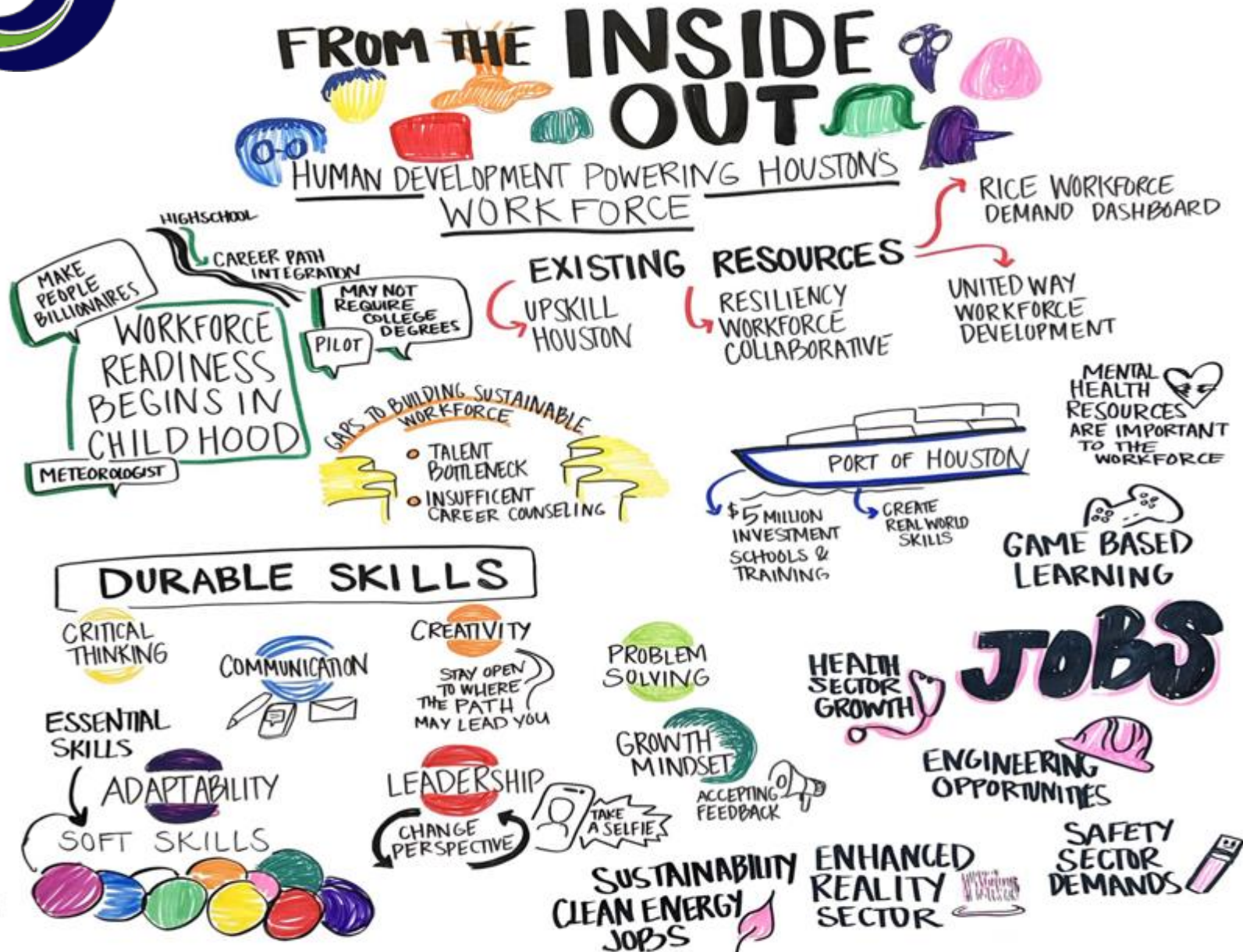
# Future Workforce/ Economic Mobility







# Future Workforce/Economic Mobility



Center For Houston's Future Fall 2025 Learning Journey  
Visual Note by Kristen McLean [kristenvisualnotes.com](http://kristenvisualnotes.com)





## Day 8: The Importance of Early Childhood Education Silver Eagle Distributors







# Early Childhood Education

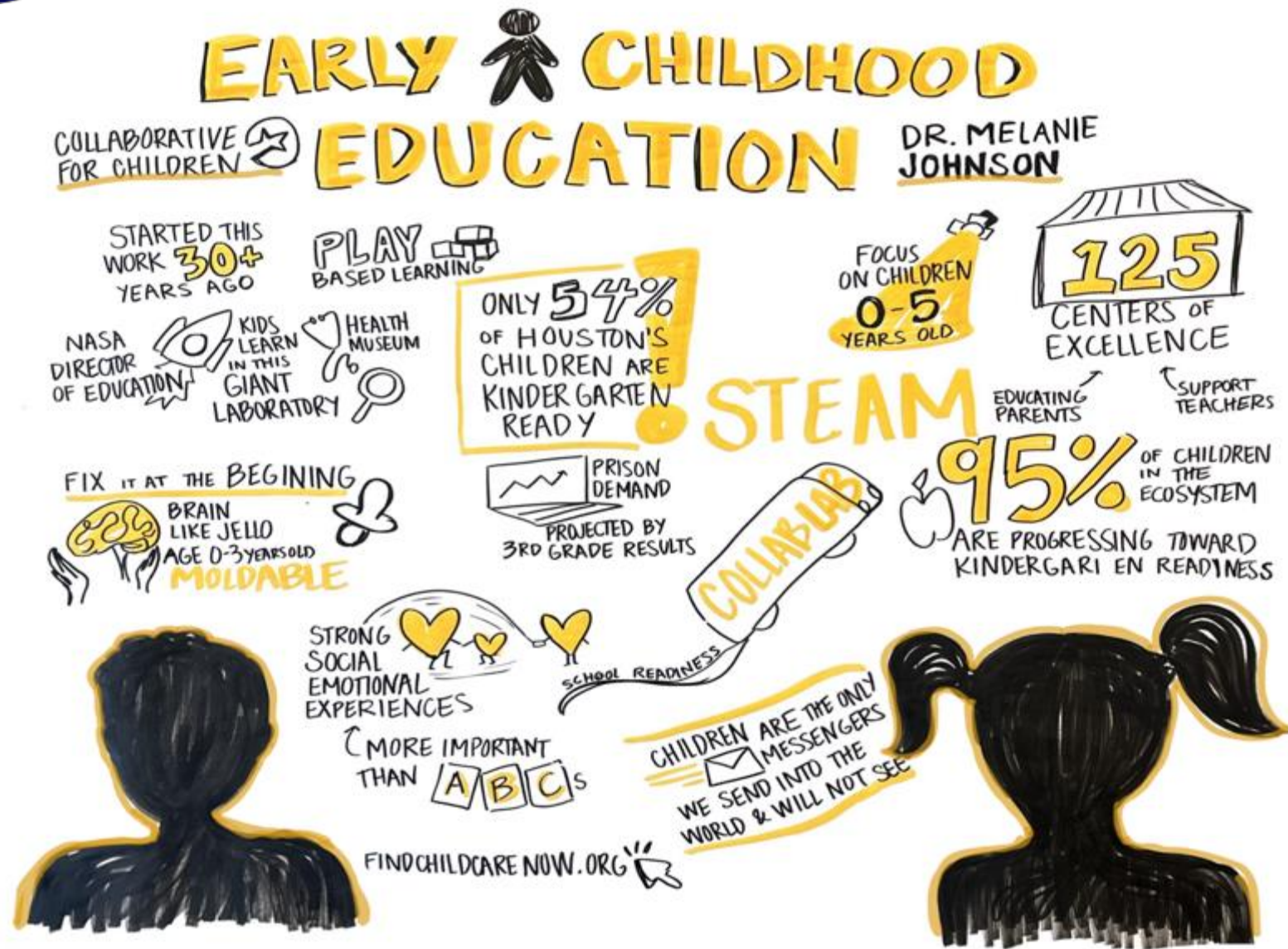
## Dr. Melanie Johnson, Collaborative for Children





# Early Childhood Education

Dr. Melanie Johnson, Collaborative for Children



Center For Houston's Future Fall 2025 Learning Journey  
Visual Note by Kristen McLean kristenvisualnotes.com





# CEO and Board Chair Acknowledgement

David Gow, the Center's President & CEO, and Cindy Yeilding, the Center's Board Chair congratulated the Fall 2025 cohort.







# Graduation







# Graduation







# Graduation







# Graduation







# Congratulations CHF Class of 2025

